

"Drei Wünsche"

Gedicht von Dr. Fr. Huber

componirt für eine

Singstimme

mit Begleitung

des

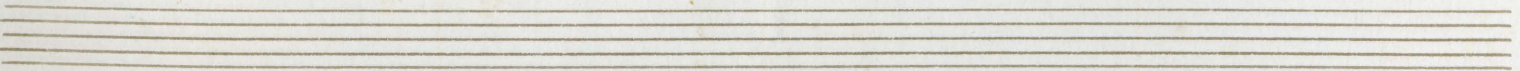
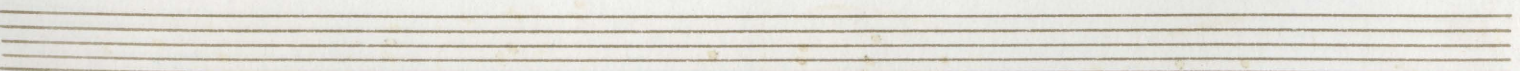
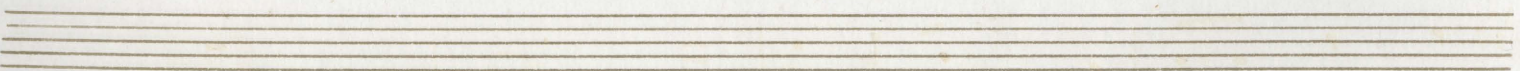
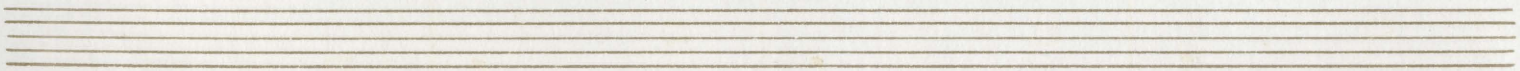
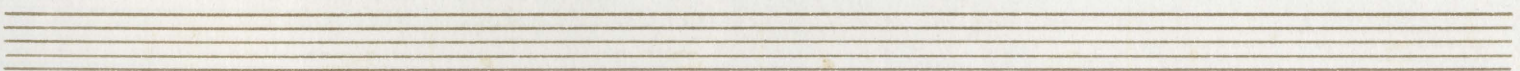
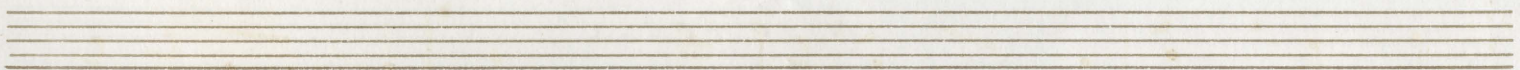
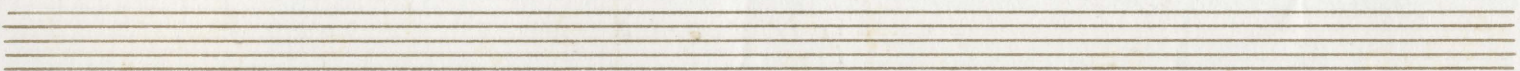
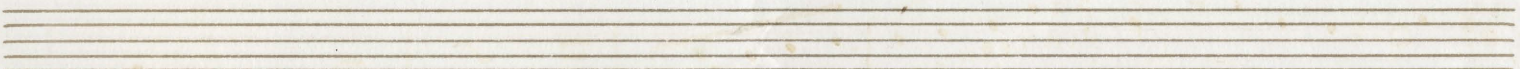
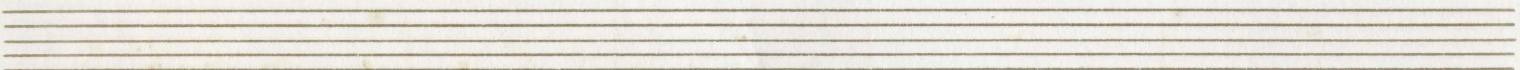
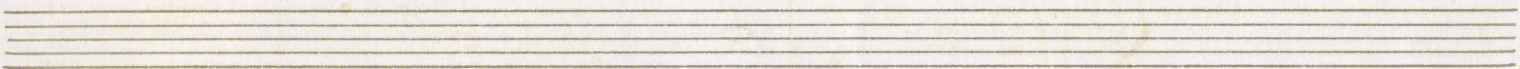
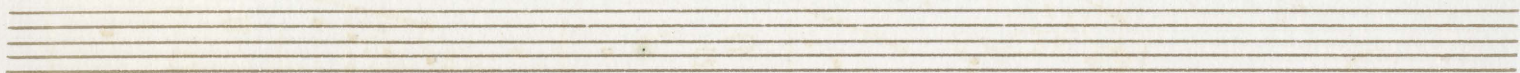
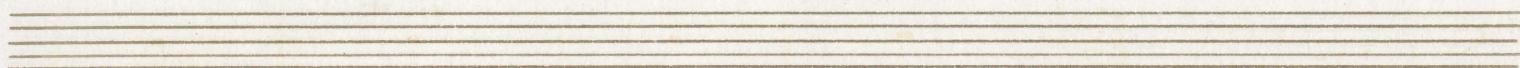
Piano forte

von

Carl Oberthür.

Op. 236.

London W. Cramer.



Gedicht von Dr. Fr. Huber.

Musik v. C. Berthius - Op 236.

Handwritten musical score for a piece titled "Singstimm" (Singing Voice) and "Piano". The score is written on five staves. The top staff is for the Singstimm, marked with a treble clef, a key signature of two sharps (F# and C#), and a 3/4 time signature. The tempo is marked "Modto" (Moderato) and the performance instruction is "p con eoprep:". The bottom four staves are for the Piano, marked with a grand staff (treble and bass clefs), the same key signature, and a 3/4 time signature. The piano part features a series of chords and single notes, with the numbers 1, 2, 3, and 4 written below the first four measures, likely indicating fingerings or a sequence of chords. The handwriting is in brown ink on aged paper.

Solace espress^{vo}

Ich wollt', ich wär' eine

cresc...

p

legato

5.

7.

Handwritten musical score for the song "Die Beere" by Carl Schubert. The score is written on two staves. The top staff is for the voice, and the bottom staff is for the piano accompaniment. The key signature is one sharp (F#), indicating G major. The time signature is 3/4. The lyrics are written below the voice staff.

Beere Von süßem Saft ge-füllt, Und hing an seinem

Handwritten musical score for "Die Stange" by Franz Schubert. The score is written on two staves. The top staff is for the voice, and the bottom staff is for the piano. The key signature is D major (two sharps). The time signature is 4/4. The lyrics are "Stange Am Stange unverhüllt." The piano part features a prominent arpeggiated figure in the right hand.

Con passione e fo.

Wie fühlet' ich mich be-glücket, Von

A B

dei - nem Busse be-rührt Von dei - -rer Hand ge-pflücket Zu

C D E

molto espre^{vo}

dei - nem Munde-führet! - Von dei - -rer Hand ge-pflücket, Zu

molto sosten... Tempo I^{mo}

dei - nem Munde-führet!

colla parti

p espre^{vo}

1 2 3 4 5

molto espress.

pran - gen, welch ein Glück — Am Sei - nem schönen Halse zu

molto sosten.

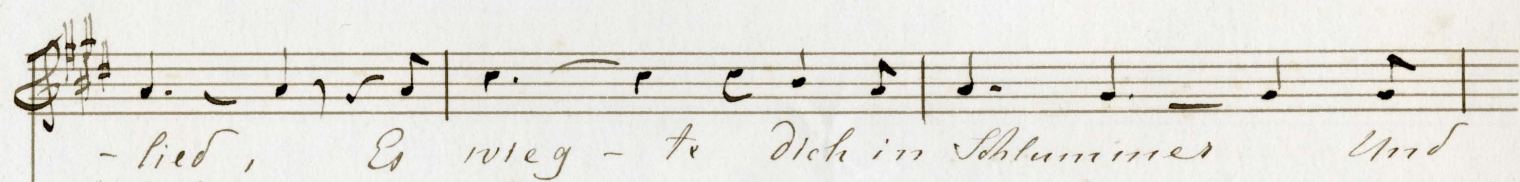
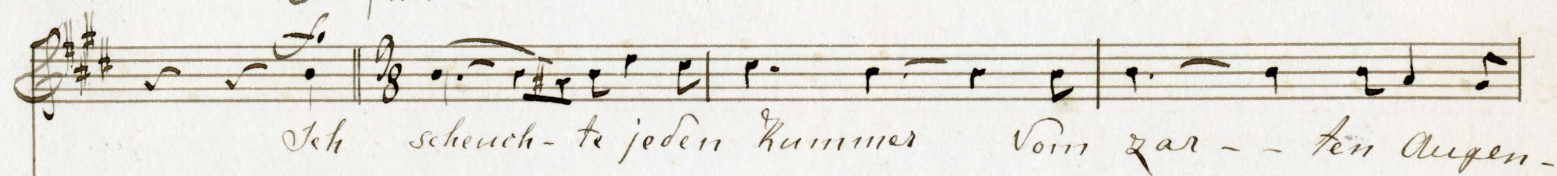
pran - gen, welch ein Glück !

Solo espress.

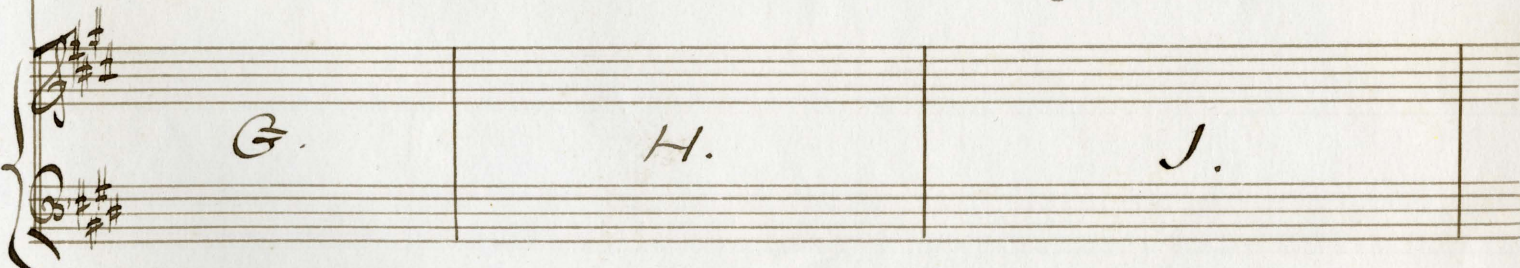
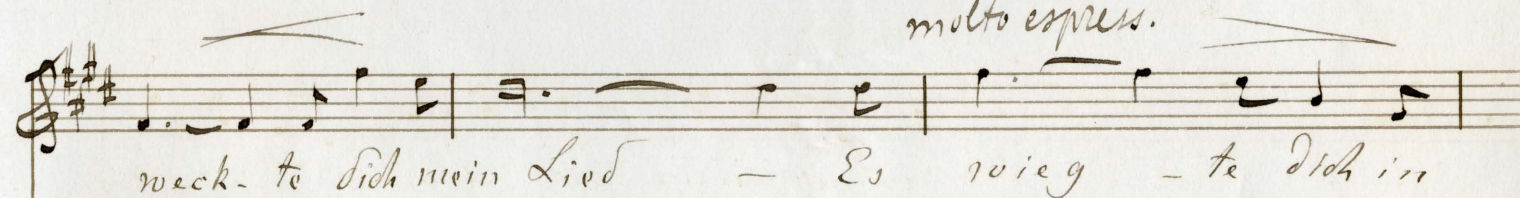
Ich wollt' ich wär' ein Vogel Und mit Be - se - heit das

Loos, Von der ier Hand ge - nährt Zu ruhn auf seinem Schoos.

con passione



molto espress.



molto sosten.

